

The Mission | The Model | The Impact



Communities
In Schools

Georgia

In schools to help kids stay in school.



Our Mission... And Yours

The Mission of Communities In Schools is to surround students with a community of support, empowering them to ***stay in school and achieve in life.***

Our mission aligns with one of the top three causes Americans care about: **children's education.**

And our impact goes beyond education.

It's about children's **health, wellbeing, productivity** and **success** in life.

How We Achieve Our Mission

The Challenge



Many students and their families living in poverty have a hard time accessing and navigating the maze of public and private services available.

There may be ample resources in a community, but rarely someone on the ground who is able to connect these resources with the schools and students that need them most.

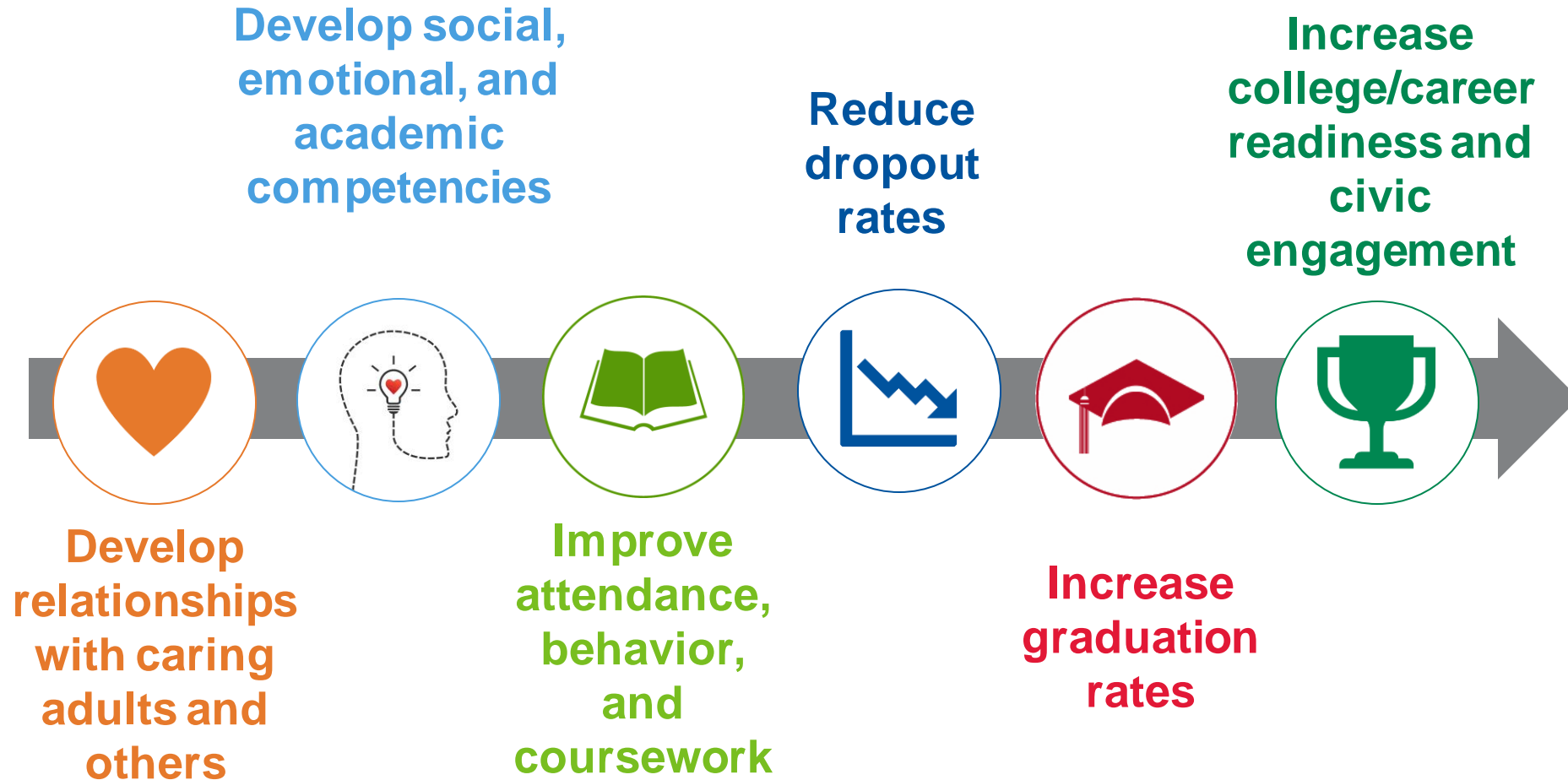
Our Solution



Through a school-based **site coordinator**, we bring community resources into schools to remove barriers for students at risk of dropping out, keeping kids in schools and on the path to graduation.

CIS Site Coordinators leverage evidence, relationships and local resources to drive results.

CIS Theory of Change



The CIS Model

Our Unique Model



- **CIS AFFILIATES**

Hire and train site coordinators, bring the CIS model to schools in need and mobilize partners to provide resources.

- **CIS AFFILIATES**
- **SITE COORDINATORS**
- **COLLABORATIVE PARTNERS**



Our Unique Model



- **Site Coordinators**

Trained professionals who work with school administrators to assess needs, develop a plan and build a team to provide supports to schools and students.

- **CIS AFFILIATES**
- **SITE COORDINATORS**
- **COLLABORATIVE PARTNERS**



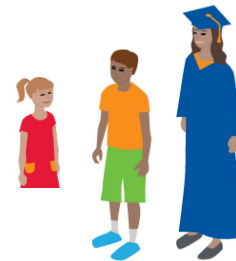
Our Unique Model



- **Collaborative Partners**

Schools, businesses and community agencies all work together with site coordinator to deliver supports to students and families.

- CIS AFFILIATES
- SITE COORDINATORS
- **COLLABORATIVE PARTNERS**



Our Unique Model



1 Needs Assessment

Analyze multiple sources of data to identify the key needs of the school and individual students.

2 Planning

Site coordinators lead their school support team to develop a plan to prioritize supports that address academic and non-academic needs.

Our Unique Model



3 Integrated Student Supports

Site coordinator and partners deliver tiers of support to the school, students and their families.



- CIS AFFILIATES
- SITE COORDINATORS
- COLLABORATIVE PARTNERS



Academic Assistance



Basic Needs



Behavioral Interventions



Enrichment



Family Engagement



Life Skills



College & Career Prep



Community & Service Learning



Mental Health



Physical Health

Our Unique Model



4 Monitoring & Adjusting

Site coordinator continuously monitors student and school progress and adjusts supports to optimize results.

5 Evaluation

Continuous assessment of partners and student supports by the CIS affiliate to demonstrate results and improve practice.

Our Unique Model



6 Proven Success

We increase graduation, reduce dropout, and improve attendance for schools in need.

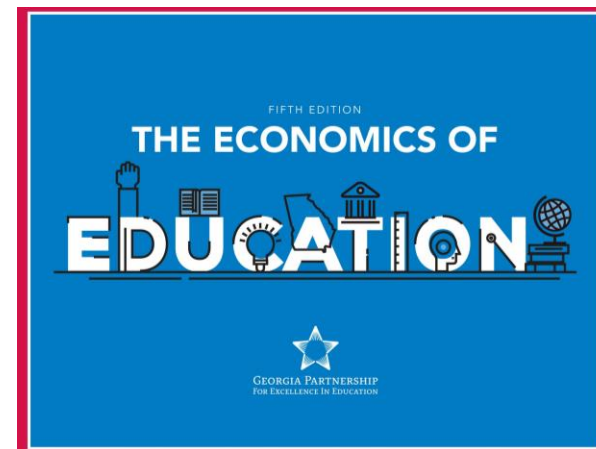
Building Blocks to Student Success

Attendance

Behavior

Coursework

Economic Impact





The cost of dropping out

For almost a third of American students, the door to a bright future closes when they leave school without a diploma.

Students who drop out are more likely to:

- live in poverty
- earn less over a working lifetime
- suffer poor health
- be dependent on social services
- enter the criminal justice system.
- cost over \$292,000 over the course of his/her lifetime

Programs & Supports

Empowering Students to Stay in School



Individualized Case Management to identify the barriers students face in their journey to graduation.



Targeted Programs to support student groups through challenges and develop students to realize their potential or how to navigate social challenges



Whole school programming to support and elevate the culture and climate of the school.



Ambassador Leadership Program to identify and develop potential leaders within the school



Career/Job Fairs



College Tours

Basic Needs Support



Mentor Groups



Financial Literacy





College Tours



Awards & Incentives



Financial Literacy

Thank you



Communities
In Schools

Georgia

In schools to help kids stay in school.